

**(NO) Touch  
Washroom  
Accessories**





## **AUTOMATIC PAPER TOWEL DISPENSERS**

### **STANDARD FEATURES**

- Proximity sensing no-touch operation
- Dispenses a pre-set length per cycle from 8" or 9" (203 or 230 mm) wide, 800 ft. (244 m) long rolls.
- AC and battery operated (4) D-size

### **AVAILABLE MOUNTING STYLES**

All units may be available in three mounting styles: Recessed, Semi-Recessed, and Surface Mounted. Visit [americanspecialties.com](http://americanspecialties.com) for additional details.

### **POWER SOURCE**

Units can be hard-wired or battery-operated. Battery-Operated – Suffix "A" in the product number indicates that the unit is powered by four (4) D-size batteries (not supplied) Hard-Wired – replace suffix "A" in the product number with the suffix "AC"

### **AUTOMATIC MECHANISM**

Units automatically dispense one predetermined length at a time when hands are placed in sensor zone. The owner can predetermine the length of towel dispensed.



**04692A TRADITIONAL™ AUTOMATIC RECESSED ROLL PAPER TOWEL DISPENSER AND WASTE RECEPTACLE**

Proximity sensing no-touch unit dispenses a pre-set length per cycle from 8" or 9" (205 or 230 mm) wide, 800 ft. (244 m) long rolls. Fabricated of 22 gauge stainless steel, 18 gauge door.

**SUFFIX OPTIONS FOR POWER/MOUNTING:**  
[A, A-6, A-9, AC, AC-6, AC-9]

**A:** Powered by 4 D-size batteries (not included).  
**AC:** Powered by AC plug-in adapter.  
**-6:** Semi-recessed with 6" stainless steel collar.  
**-9:** Surface mounted with 9" stainless steel collar.  
**04692:** Mechanical lever dispenser.

**Unit Size:** 17<sup>1</sup>/<sub>4</sub>" x 56" x 10<sup>1</sup>/<sub>4</sub>"  
(438 x 1422 x 260 mm)  
**Wall Opening:** 15<sup>3</sup>/<sub>4</sub>" x 54<sup>1</sup>/<sub>2</sub>" x 10"  
(400 x 1384 x 254 mm)



**94696A PROFILE™ AUTOMATIC RECESSED ROLL PAPER TOWEL DISPENSER AND WASTE RECEPTACLE**

Proximity sensing no-touch unit dispenses a pre-set length per cycle from 8" or 9" (205 or 230 mm) wide, 800 ft. (244 m) long rolls. 16 gauge stainless steel door. 10 gal. (37.8 L) stainless steel waste receptacle.

**SUFFIX OPTIONS FOR POWER/MOUNTING:**  
[A, A-6, A-9, AC, AC-6, AC-9]

**A:** Powered by 4 D-size batteries (not included).  
**AC:** Powered by AC plug-in adapter.  
**-6:** Semi-recessed with 6" stainless steel collar.  
**-9:** Surface mounted with 9" stainless steel collar.  
**94696:** Mechanical lever dispenser.

**Unit Size:** 16<sup>7</sup>/<sub>16</sub>" x 41<sup>1</sup>/<sub>4</sub>" x 10<sup>11</sup>/<sub>16</sub>"  
(408 x 1048 x 272 mm)  
**Wall Opening:** 14<sup>5</sup>/<sub>8</sub>" x 39<sup>3</sup>/<sub>4</sub>" x 10"  
(371 x 1010 x 254 mm)



**046921A TRADITIONAL™ AUTOMATIC RECESSED ROLL PAPER TOWEL DISPENSER AND WASTE RECEPTACLE**

Proximity sensing no-touch recessed unit dispenses a pre-set length per cycle from 8" or 9" (205 or 230 mm) wide, 800 ft. (244 m) long rolls. 12 gal. (45.4 L) waste receptacle. Fabricated of 22 gauge stainless steel, 18 gauge door.

**SUFFIX OPTIONS FOR POWER/MOUNTING:**  
[A, A-6, A-9, AC, AC-6, AC-9]

**A:** Powered by 4 D-size batteries (not included).  
**AC:** Powered by AC plug-in adapter.  
**-6:** Semi-recessed with 6" stainless steel collar.  
**-9:** Surface mounted with 9" stainless steel collar.

**Unit Size:** 17<sup>1</sup>/<sub>4</sub>" x 56" x 10<sup>1</sup>/<sub>4</sub>"  
(438 x 1422 x 260 mm)  
**Wall Opening:** 15<sup>3</sup>/<sub>4</sub>" x 54<sup>1</sup>/<sub>2</sub>" x 10<sup>1</sup>/<sub>4</sub>"  
(400 x 1384 x 260 mm)

**NEW**



**646924A SIMPLICITY™ AUTOMATIC RECESSED ROLL PAPER TOWEL DISPENSER AND WASTE RECEPTACLE**

Proximity sensing no-touch recessed unit dispenses a pre-set length per cycle from 8" or 9" (205 or 230 mm) wide, 800 ft. (244 mm) long rolls. 12 gal. (45.4 L) waste receptacle. Fabricated of 22 gauge stainless steel, 18 gauge door. (Replaced 046924A/AC/A-9/AC-9)

**SUFFIX OPTIONS FOR POWER/MOUNTING:**  
[A, A-9, AC, AC-9]

**A:** Powered by 4 D-size batteries (not included).  
**AC:** Powered by AC plug-in adapter.  
**-9:** Surface mounted with 9" stainless steel collar.

**Unit Size:** 17<sup>1</sup>/<sub>4</sub>" x 56" x 10<sup>1</sup>/<sub>4</sub>"  
(438 x 1422 x 260 mm)  
**Wall Opening:** 15<sup>3</sup>/<sub>4</sub>" x 54<sup>1</sup>/<sub>2</sub>" x 4"  
(400 x 1384 x 102 mm)



**64696A SIMPLICITY™ AUTOMATIC RECESSED ROLL PAPER TOWEL DISPENSER AND WASTE RECEPTACLE**

Proximity sensing no-touch unit dispenses a pre-set length per cycle from 8" or 9" (205 or 230 mm) wide, 800 ft. (244 m) long rolls. 9.9 gal. (37.3 L) stainless steel waste receptacle. 18 gauge stainless steel door.

**SUFFIX OPTIONS FOR POWER/MOUNTING:**  
[A, A-6, A-9, AC, AC-6, AC-9]

**A:** Powered by 4 D-size batteries (not included).

**AC:** Powered by AC plug-in adapter.

**-6:** Semi-recessed with 6" stainless steel collar.

**-9:** Surface mounted with 9" stainless steel collar.

**Piatto Collection™ -00/-41** white/matte black phenolic doors

**Unit Size:**  
16<sup>1</sup>/<sub>16</sub>" x 41<sup>1</sup>/<sub>4</sub>" x 10<sup>1</sup>/<sub>4</sub>"  
(408 x 1048 x 261 mm)

**Wall Opening:**  
14<sup>5</sup>/<sub>8</sub>" x 39<sup>3</sup>/<sub>4</sub>" x 10"  
(371 x 1010 x 254 mm)



**204692A ROVAL™ AUTOMATIC RECESSED ROLL PAPER TOWEL DISPENSER AND WASTE RECEPTACLE**

Fabricated of 18 gauge stainless steel. 17.8 gal. (67.2 L) removable waste receptacle. Towel length is determined by owner by setting length, delay, and paper saver switches.

**SUFFIX OPTIONS FOR POWER/MOUNTING:**  
[A, A-6, A-9, AC, AC-6, AC-9]

**A:** Powered by 4 D-size batteries (not included).

**AC:** Powered by AC plug-in adapter.

**-6:** Semi-recessed with 6" stainless steel collar.

**-9:** Surface mounted with 9" stainless steel collar.

**Unit Size:**  
17<sup>3</sup>/<sub>8</sub>" x 56<sup>1</sup>/<sub>16</sub>" x 11<sup>1</sup>/<sub>16</sub>"  
(441 x 1424 x 297 mm)

**Wall Opening:**  
15<sup>1</sup>/<sub>16</sub>" x 54<sup>1</sup>/<sub>16</sub>" x 10"  
(402 x 1389 x 254 mm)



**2046921A ROVAL™ AUTOMATIC RECESSED ROLL PAPER TOWEL DISPENSER AND WASTE RECEPTACLE FOR ADA COMPLIANCE**

Smaller waste receptacle, 13.5 gal. (51.1 L), allows unit to be ADA compliant. Cabinet and frame fabricated of 22 gauge stainless steel. Internal shelf is ideal for paper towel storage. Towel length is determined by owner by setting length, delay, and paper saver switches.

**SUFFIX OPTIONS FOR POWER/MOUNTING:**  
[A, A-6, A-9, AC, AC-6, AC-9]

**A:** Powered by 4 D-size batteries (not included).

**AC:** Powered by AC plug-in adapter.

**-6:** Semi-recessed with 6" stainless steel collar.

**-9:** Surface mounted with 9" stainless steel collar.

**Unit Size:**  
17<sup>3</sup>/<sub>8</sub>" x 56<sup>1</sup>/<sub>16</sub>" x 11<sup>1</sup>/<sub>16</sub>"  
(441 x 1424 x 296 mm)

**Wall Opening:**  
15<sup>1</sup>/<sub>16</sub>" x 54<sup>1</sup>/<sub>16</sub>" x 10"  
(402 x 1389 x 254 mm)



**64672-1 SIMPLICITY™ RECESSED 3-IN-1 PAPER TOWEL DISPENSER, HIGH SPEED HAND DRYER AND WASTE RECEPTACLE**

Paper towel dispenser with waste receptacle and < 15 second automatic hand dryer. Dispenses 500 multi-fold or 400 C-fold paper towels, and has a waste capacity of 6.8 gal. (26 L). 18 gauge stainless steel door. 110-120V. Optional voltages available.

**MODEL OPTIONS:**

**64672-2** Dryer Voltage is 208-240V Dryer.

**64672** Cabinet only – no hand dryer included.

**Piatto™ Collection -00/-41** white/matte black phenolic doors

**Unit Size:**  
15<sup>3</sup>/<sub>8</sub>" x 55<sup>3</sup>/<sub>8</sub>" x 7<sup>1</sup>/<sub>2</sub>"  
(391 x 1407 x 191 mm)

**Wall Opening:**  
14<sup>2</sup>/<sub>32</sub>" x 54<sup>3</sup>/<sub>8</sub>" x 7<sup>1</sup>/<sub>4</sub>"  
(358 x 1381 x 184 mm)

**Decibel Level:** 68.9-74.3 dB-A @ 2M







**045210A TRADITIONAL™ AUTOMATIC RECESSED ROLL PAPER TOWEL DISPENSER**



Dispenses pre-set length from 8" or 9" wide rolls. Fabricated of 22 gauge stainless steel, 18 gauge door.

**SUFFIX OPTIONS FOR POWER/MOUNTING:**  
**[A, A-6, A-9, AC, AC-6, AC-9]**

**A:** Powered by 4 D-size batteries (not included).

**AC:** Powered by AC plug-in adapter.

**-6:** Semi-recessed with 6" stainless steel collar.

**-9:** Surface mounted with 9" stainless steel collar.

**Piatto Collection™ -00/-41** white/matte black phenolic doors

**Unit Size:**  
17<sup>3</sup>/<sub>4</sub>" x 28" x 10"  
(438 x 711 x 254 mm)

**Wall Opening:**  
15<sup>3</sup>/<sub>4</sub>" x 26<sup>1</sup>/<sub>2</sub>" x 10<sup>1</sup>/<sub>4</sub>"  
(400 x 673 x 260 mm)



**68523A-4 SIMPLICITY™ AUTOMATIC SEMI-RECESSED ROLL PAPER TOWEL DISPENSER**



Proximity sensing no-touch unit dispenses a pre-set length per cycle from 8" standard towel roll up to 800 ft. (244m) long and has stub roll capability for continuous dispensing.

**MODEL OPTION:**

**68523A** battery operated, surface mounted.

**68523AC** roll towel dispenser, 110-240V/AC, surface mounted.

**68523AC-4** roll towel dispenser, 110-240V/AC, semi-recessed.

**Unit Size:**  
17<sup>5</sup>/<sub>16</sub>" x 20<sup>3</sup>/<sub>16</sub>" x 9<sup>1</sup>/<sub>2</sub>"  
(440 x 518 x 241 mm)

**Wall Opening:**  
15<sup>3</sup>/<sub>16</sub>" x 19" x 4"  
(391 x 483 x 102 mm)



**204523A ROVAL™ AUTOMATIC RECESSED ROLL PAPER TOWEL DISPENSER**

Fabricated of 22 gauge stainless steel with satin finish. Towel length is determined by owner by setting length, delay and paper saver switches.

**SUFFIX OPTIONS FOR POWER/MOUNTING:**  
**[A, A-6, A-9, AC, AC-6, AC-9]**

**A:** Powered by 4 D-size batteries (not included).

**AC:** Powered by AC plug-in adapter.

**-6:** Semi-recessed with 6" stainless steel collar.

**-9:** Surface mounted with 9" stainless steel collar.

**Unit Size:**  
17<sup>3</sup>/<sub>8</sub>" x 27<sup>3</sup>/<sub>4</sub>" x 11<sup>11</sup>/<sub>16</sub>"  
(441 x 705 x 297 mm)

**Wall Opening:**  
15<sup>3</sup>/<sub>4</sub>" x 26" x 10"  
(400 x 660 x 254 mm)



**045224A TRADITIONAL™ AUTOMATIC RECESSED ROLL PAPER TOWEL DISPENSER**



Dispenses pre-set length from 8" or 9" wide rolls. Fabricated of 22 gauge stainless steel, 18 gauge door.

**SUFFIX OPTIONS FOR POWER/MOUNTING:**  
**[A, A-6, A-9, AC, AC-6, AC-9]**

**A:** Powered by 4 D-size batteries (not included).

**AC:** Powered by AC plug-in adapter.

**-6:** Semi-recessed with 6" stainless steel collar.

**-9:** Surface mounted with 9" stainless steel collar.

**045224:** Mechanical lever dispenser.

**Unit Size:**  
17<sup>1</sup>/<sub>4</sub>" x 30<sup>1</sup>/<sub>2</sub>" x 10<sup>1</sup>/<sub>4</sub>"  
(438 x 775 x 260 mm)

**Wall Opening:**  
15<sup>3</sup>/<sub>4</sub>" x 29" x 4"  
(400 x 737 x 102 mm)

## EZ Fill™ Top Fill Multi-Feed Soap Dispensing System

SHOWN: 0397-1AC EZ FILL™ WATER FAUCET – CHROME,  
0394-1AC EZ FILL™ FOAM SOAP DISPENSER – CHROME, and  
0394-1AC-41 EZ FILL™ FOAM SOAP DISPENSER – MATTE BLACK



### EZ FILL™ FEATURES

- Top-fill, expandable system
- Heavy-duty brass soap dispensers and water faucets with chrome plated and matte black finishes
- Available in liquid and foam soap
- Counter-mounted port has an anti-theft cover
- Easy to use
- This EZ FILL™ system is electrically operated using batteries or alternating current
- Anti-Rotation Flange





**FS-0300 HAND SANITIZER DISPENSER STAND FOR MODELS 0361/0362/20364/20365**

Type 304 stainless steel 11 gauge stand is designed with rounded edges for user safety, with an 18 gauge mounting plate and tube. The universal mounting plate has mounting holes to accommodate 20364 and 20365 dispensers and a flat surface to allow tape mounting of units 0361 and 0362 (all purchased separately), on the same plate, one at a time.

**Overall Dimensions:**  
 56<sup>51/64</sup>" (1446 mm) H  
 Tube: 1<sup>1/2</sup>" (38 mm) dia.  
 Base: 16" x 16" (406 x 406 mm)



**20365 ROVAL™ AUTOMATIC SURFACE MOUNTED FOAM SOAP & HAND SANITIZER DISPENSER**

**TOUCHLESS OPERATION:** A single shot of foam soap or hand sanitizer is automatically dispensed when the sensor under the dispenser is activated. Robust 22 gauge, type 304 stainless steel with translucent removable tank. Powdered by 6 AA-size batteries (not included)

Capacity: 33.8 oz. (1000 ml)  
 Unit can be either wall mounted, or mounted to a mobile stand offered as an additional option by ASI – Part # FS-0300.

**Overall Dimensions:**  
 5<sup>1/2</sup>" x 10<sup>7/8</sup>" x 4"  
 (140 x 276 x 102 mm)



**20364 ROVAL™ AUTOMATIC SURFACE MOUNTED LIQUID SOAP & HAND SANITIZER DISPENSER**

**TOUCHLESS OPERATION:** A single shot of liquid soap or hand sanitizer is automatically dispensed when the sensor under the dispenser is activated. Robust 22 gauge, type 304 stainless steel with translucent removable tank. Powdered by 6 AA-size batteries (not included)

Capacity: 33.8 oz. (1000 ml)  
 Unit can be either wall mounted, or mounted to a mobile stand offered as an additional option by ASI – Part # FS-0300.

**Overall Dimensions:**  
 5<sup>1/2</sup>" x 10<sup>7/8</sup>" x 4"  
 (140 x 276 x 102 mm)



**0361 AUTOMATIC SURFACE MOUNTED LIQUID SOAP DISPENSER**

**TOUCHLESS OPERATION:** A single shot of liquid soap or hand sanitizer is automatically dispensed when the sensor under the dispenser is activated. White, high-impact plastic, tamper-resistant soap or hand sanitizer level viewing window, swing open body with special lock and key.

Unit can be either wall mounted, or mounted to a mobile stand offered as an additional option by ASI – Part # FS-0300.

Powered by one 9V or 6 AA-size batteries (not included).

Capacity: 28 fl. oz. (0.8 L)

**Overall Dimensions:**  
 4<sup>3/8</sup>" x 10<sup>5/8</sup>" x 4<sup>1/16</sup>"  
 (118 x 262 x 113 mm)



**0362-41 AUTOMATIC SURFACE MOUNTED LIQUID SOAP & HAND SANITIZER DISPENSER – MATTE BLACK**

**TOUCHLESS OPERATION:** A single shot of liquid soap or hand sanitizer is automatically dispensed by a battery operated mechanism when the sensor under the dispenser is activated. Stainless steel soap and hand sanitizer dispenser has tamper-resistant viewing window.

Unit can be either wall mounted, or mounted to a mobile stand offered as an additional option by ASI – Part # FS-0300.

Capacity: 30 oz.(900 ml)

Powered by 6 AA-size batteries (not included)

**Overall Dimensions:**  
 4<sup>3/8</sup>" x 10<sup>5/8</sup>" x 4<sup>1/8</sup>"  
 (122 x 270 x 105 mm)



**0362 AUTOMATIC SURFACE MOUNTED LIQUID SOAP & HAND SANITIZER DISPENSER**

**TOUCHLESS OPERATION:** A single shot of liquid soap or hand sanitizer is automatically dispensed by a battery operated mechanism when the sensor under the dispenser is activated. Stainless steel soap and hand sanitizer dispenser has tamper-resistant viewing window.

Unit can be either wall mounted, or mounted to a mobile stand offered as an additional option by ASI – Part # FS-0300.

Capacity: 30 oz.(900 ml)

Powered by 6 AA-size batteries (not included)

**Overall Dimensions:**  
 4<sup>3/8</sup>" x 10<sup>5/8</sup>" x 4<sup>1/8</sup>"  
 (122 x 270 x 105 mm)



**Products on this page dispense both soap and hand sanitizer**

See each product for individual information.

Technical and pH/viscosity information available on americanspecialties.com





**NEW**

**0338 TOP FILL AUTOMATIC VANITY MOUNTED LIQUID SOAP DISPENSER**

Anti-theft top opens with funnel that has built in key for neat and easy maintenance. LED ring indicates low liquid soap levels and incorrect soap. Smart Sensor prevents messy overfilling by beeping and flashing LED ring. AC Powered, 51 oz. (1.5 L) capacity.

**Unit Size:**

1½" x 5¾" (38 x 137 mm)

(dispenser body only)

Spout projection: 37⁄8" (98 mm)



**20333 AUTOMATIC VANITY MOUNTED LIQUID SOAP DISPENSER**

Unit has chrome plated brass on exposed surfaces. Powered by 4 D-size batteries (not included). LEDs indicate function, battery condition, and soap supply level on face front. Translucent tank. Capacity: 54 oz. (1.6 L) of liquid soap.

**Overall Dimensions:**

4" x 21½"

(102 x 546 mm)

Spout Projection: 37⁄8" (99 mm)



**0334-S AUTOMATIC VANITY MOUNTED LIQUID SOAP DISPENSER**

Hands-free liquid soap dispenser powered by 4 AA-size batteries (not included) or optional AC adapter (72-ACA, not included). Stainless steel body, all exposed stainless steel surfaces have a satin finish. Capacity: 50.7 oz. (1500 ml).

**MODEL OPTION:**

**0334-B** Stainless steel with bright finish.

**Unit Size:**

1½" x 313⁄16" (38 x 97 mm)

(dispenser body only)

Spout projection: 37⁄8" (98 mm)



**NEW**

**0339 TOP FILL AUTOMATIC VANITY MOUNTED FOAM SOAP DISPENSER**

Anti-theft top opens with funnel that has built in key for neat and easy maintenance. LED ring indicates low foam soap levels and incorrect soap. Smart Sensor prevents messy overfilling by beeping and flashing LED ring. AC Powered, 51 oz. (1.5 L) capacity.

**Unit Size:**

1½" x 53⁄8" (38 x 137 mm)

(dispenser body only)

Spout projection: 37⁄8" (98 mm)



**20334 AUTOMATIC VANITY MOUNTED FOAM SOAP DISPENSER**

Unit has chrome plated brass on exposed surfaces. Powered by 4 D-size batteries (not included). LEDs indicate function, battery condition, and soap supply level on face front. Translucent tank. Capacity: 54 oz. (1.6 L) of foam soap.

**Overall Dimensions:**

6¾" x 16"

(172 x 407 mm)

Spout Projection: 37⁄8" (99 mm)



**0335-B AUTOMATIC VANITY MOUNTED FOAM SOAP DISPENSER**

Hands-free foam soap dispenser powered by 4 AA-size batteries (not included) or optional AC adapter (72-ACA, not included). Stainless steel body, all exposed stainless steel surfaces have a bright finish. Capacity: 50.7 oz. (1500 ml).

**MODEL OPTION:**

**0335-S** Stainless steel with satin finish.

**Unit Size:**

1½" x 313⁄16" (38 x 97 mm)

(dispenser body only)

Spout projection: 37⁄8" (98 mm)





**0397 EZ FILL™ WATER FAUCET – CHROME**

Matching water faucet for EZ Fill™ soap dispensing system. Constructed of chrome plated spout and battery or AC power operated, hands-free sensor housing with a highly polished, or matte black (-41) finish over all surfaces.



**NEW**

**0661-1 VELARE™ STAINLESS STEEL CABINET WITH LIQUID SOAP DISPENSER AND HIGH-SPEED HAND DRYER**

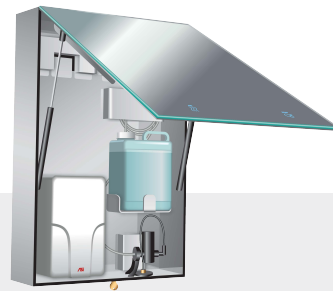
This wall mounted stainless steel cabinet conceals a hands-free automatic liquid soap dispenser with a 1.5 gal (6 L) capacity and a high-speed hand dryer (110-120V) equipped with a HEPA filter.

**MODEL OPTION:**

**0661-2** Velare™ Stainless Steel Cabinet with Liquid Soap and Hand Dryer (208~240V).

**Overall Dimensions:**

23<sup>5</sup>/<sub>8</sub>" x 35<sup>7</sup>/<sub>16</sub>" x 7<sup>9</sup>/<sub>16</sub>"  
(600 x 900 x 192)



**NEW**

**0663-1 VELARE™ STAINLESS STEEL CABINET WITH FOAM SOAP DISPENSER AND HIGH-SPEED HAND DRYER**

This wall mounted stainless steel cabinet conceals a hands-free automatic foam soap dispenser with a 1.5 gal (6 L) capacity and a high-speed hand dryer (110-120V) equipped with a HEPA filter.

**MODEL OPTION:**

**0663-2** Velare™ Stainless Steel Cabinet with Foam Soap and Hand Dryer (208~240V).

**Overall Dimensions:**

23<sup>5</sup>/<sub>8</sub>" x 35<sup>7</sup>/<sub>16</sub>" x 7<sup>9</sup>/<sub>16</sub>"  
(600 x 900 x 192)



**0360 AUTOMATIC SURFACE MOUNTED LIQUID SOAP DISPENSER**

Stainless steel soap dispenser in satin finish with proximity sensor. Powered by 6 AA-size batteries (not included) and has tamper-resistant viewing window, removable lid with special lock and key. Capacity: 35 fl. oz. (1 L).

**Overall Dimensions:**

4<sup>17</sup>/<sub>32</sub>" x 9<sup>1</sup>/<sub>4</sub>" x 4<sup>7</sup>/<sub>8</sub>"  
(115 x 235 x 124 mm)



**NEW**

**0661-T VELARE™ STAINLESS STEEL CABINET WITH LIQUID SOAP DISPENSER, AND PAPER TOWEL DISPENSER**

This wall mounted stainless steel cabinet conceals a hands-free automatic liquid soap dispenser with a 1.5 gal (6 L) capacity and paper towel dispenser with a 500 towel capacity.

**Overall Dimensions:**

23<sup>5</sup>/<sub>8</sub>" x 35<sup>7</sup>/<sub>16</sub>" x 7<sup>9</sup>/<sub>16</sub>"  
(600 x 900 x 192)



**NEW**

**0663-T VELARE™ STAINLESS STEEL CABINET WITH FOAM SOAP DISPENSER, AND PAPER TOWEL DISPENSER**

This wall mounted stainless steel cabinet conceals a hands-free automatic liquid soap dispenser with a 1.5 gal (6 L) capacity and paper towel dispenser with a 500 towel capacity.

**Overall Dimensions:**

23<sup>5</sup>/<sub>8</sub>" x 35<sup>7</sup>/<sub>16</sub>" x 7<sup>9</sup>/<sub>16</sub>"  
(600 x 900 x 192)





SHOWN: 20200 TRI-UMPH™  
HIGH-SPEED HAND DRYER



# AUTOMATIC HAND DRYERS

## STANDARD FEATURES

- Energy Efficient
- Powerful – Thorough and fast drying
- Classic Styling – Look great in every washroom
- Sanitary – All are touchless operation
- Cost Efficient – No paper towels, less trash disposal
- More ADA-Compliant Models
- Multiple Models and Finishes – More choices
- Easy Installation – Installs quickly with standard tools
- Durable – Backed by warranties
- BAA Compliant – All comply with the Buy American Act (BAA)

## 20200 TRI-UMPH™ FEATURES

- Ultra-hygienic
- Energy efficient
- Quieter
- Fast drying
- Ceramic Evaporator Plate captures water droplets
- Drip Tray prevents puddles on the floor
- Easy to maintain
- Operating LED lights

### Overall Dimensions:

12 11/16" x 23 1/8" x 7 3/4"  
(322 x 588 x 196 mm)

Decibel Level: 62.9-67.2 dB-A @ 2M



White Finish  
20201



**NEW**

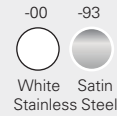
**0192 TURBO Swift™ ADA HIGH-SPEED HAND DRYER**

High-speed ADA-compliant automatic hand dryer has one piece stainless steel cover with satin finish and delivers eco-friendly and cost-saving performance. Includes adjustable infrared sensor and LED indicates power status and guides user towards air flow. Fast drying, <12 seconds. 110-120V.

**Overall Dimensions:**  
6<sup>27</sup>/<sub>32</sub>" x 10<sup>1</sup>/<sub>16</sub>" x 4"  
(174 x 256 x 102 mm)



**Decibel Level:** 74 dB-A @ 2M



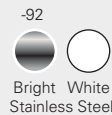
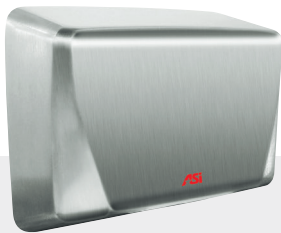
**0196-41 TURBO-PRO™ HIGH-SPEED ADA HAND DRYER**

Elegant ADA-compliant, high-speed, automatic hand dryer. A HEPA filter is used to purify the air before it dries hands. The dryer provides operating flexibility—the owner controls air temperature as well as air speed. Fast drying, <15 seconds. Available in 110-120V (-1) and 208-240V (-2).

**Overall Dimensions:**  
8<sup>5</sup>/<sub>8</sub>" x 13<sup>9</sup>/<sub>16</sub>" x 4"  
(219 x 345 x 102 mm)



**Decibel Level:** 68-73.8 dB-A @ 2M



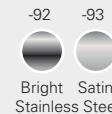
**0199-93 ASI TURBO-ADA ACCESSIBILITY COMPLIANT HIGH-SPEED HAND DRYER**

Fast drying, <15 seconds, and automatic operation using infrared sensor with auto-resetting thermostat. Owner-adjustable air speed & temperature and on/off heating options with shut off when user removes hands from sensor zone. Standard white cover; optional bright or satin stainless steel finish. Available in 110-120V (-1), 208-240V (-2), and 277V (-3).

**Overall Dimensions:**  
10<sup>5</sup>/<sub>8</sub>" x 8<sup>15</sup>/<sub>32</sub>" x 4"  
(270 x 215 x 102 mm)



**Decibel Level:** 68.9-74.3 dB-A @ 2M



**0197 TURBO-DRI™ HIGH-SPEED HAND DRYER**

Fast drying, <15 seconds, and powerful, yet quiet, with 60-second auto shut off; automatic operation using infrared sensor with auto-resetting thermostat. Heavy-duty, one-piece-formed unit in bright or satin stainless steel finish, or white porcelain enamel coated steel. Available in 115-120V (-1) and 208-240V (-2).

**Overall Dimensions:**  
8<sup>1</sup>/<sub>16</sub>" x 11<sup>19</sup>/<sub>64</sub>" x 7<sup>7</sup>/<sub>64</sub>"  
(205 x 287 x 180 mm)



**Decibel Level:** 61.2-65.2 dB-A @ 2M

\*ADA Compliant using Semi-Recessed Kit #0119



**0135 TURBO-TUFF FULLY RECESSED HIGH-SPEED HAND DRYER**

Fast drying, <15 seconds, and operates automatically using infrared sensor with auto-resetting thermostat. Owner-adjustable air speed & temperature and on/off heating options. Dryer automatically shuts off after time-out when user removes hands from sensor zone. Available in 110-120V (-1), 208-240V (-2), and 277V (-3).

**Unit Size:** 12<sup>19</sup>/<sub>32</sub>" x 15<sup>3</sup>/<sub>4</sub>" x 4<sup>1</sup>/<sub>16</sub>"  
 (320 x 400 x 103 mm)

**Wall Opening:** 12<sup>5</sup>/<sub>16</sub>" x 15<sup>3</sup>/<sub>16</sub>" x 3<sup>7</sup>/<sub>8</sub>"  
 (313 x 386 x 98 mm)

**Decibel Level:** 68.9-74.3 dB-A @ 2M



**0198-MH SAFE-DRI™ RECESSED MENTAL HEALTH APPROVED HIGH-SPEED HAND DRYER**

Anti-ligature dryer operates automatically and is designed for Behavioral Health environments—angled top, welded corners, and single tube exhaust prevent looping, tying off, wedging, and prying. Tamper-resistant 18 gauge stainless steel cover, and flush pin-hex security screws. Available in 115-120V (-1) and 208-240V (-2).

**Unit Size:** 12<sup>5</sup>/<sub>8</sub>" x 15<sup>3</sup>/<sub>4</sub>" x 5<sup>4</sup>/<sub>16</sub>"  
 (320 x 400 x 140 mm)

**Wall Opening:** 12<sup>1</sup>/<sub>4</sub>" x 15<sup>3</sup>/<sub>16</sub>" x 5<sup>1</sup>/<sub>4</sub>"  
 (311 x 386 x 133 mm)

**Decibel Level:** 66 dB-A @ 2M



**0141 PORCELAIR HAND DRYER**

Fabricated of one-piece, heavy-duty cast aluminum with white enamel coating. Quick drying, <30 seconds, and no-touch, energy efficient operation. Dries both hands and face. 120V.

**Overall Dimensions:** 9<sup>7</sup>/<sub>16</sub>" x 9<sup>41</sup>/<sub>64</sub>" x 6<sup>3</sup>/<sub>8</sub>"  
 (240 x 245 x 162 mm)

**Decibel Level:** 60-66 dB-A @ 2M



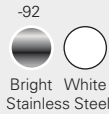
**0165 PROFILE™ COMPACT HAND DRYER**

Operates automatically from IR sensor that activates dryer when hands are placed in sensor zone. Motor and heating element have internal resetting automatic thermal protection. Fabricated of one-piece, heavy-duty cast aluminum with white enamel coating. Quick drying, <30 seconds. 115-240V.

**Overall Dimensions:** 11<sup>3</sup>/<sub>8</sub>" x 11<sup>7</sup>/<sub>32</sub>" x 3<sup>7</sup>/<sub>8</sub>"  
 (289 x 285 x 99 mm)

**Decibel Level:** 66 dB-A @ 2M





**0185-93 PROFILE™ HAND DRYER**

Universal voltage; automatically adjusts to voltages of 100-240V. Quick drying, <25 seconds, and no-touch, energy efficient operation. Modern design and durable. Cover available in one-piece steel with porcelain enamel coating, or stainless steel in bright or satin finish.

**MODEL OPTION:**

**0184** Surface mounted no-touch hand dryer, 277V.

**Overall Dimensions:**

14<sup>7</sup>/<sub>16</sub>" x 10<sup>1</sup>/<sub>16</sub>" x 3<sup>1</sup>/<sub>16</sub>"  
(367 x 275 x 100 mm)

**Decibel Level:** 69.2 dB-A @ 2M



**20199 ROVAL™ SEMI-RECESSED HIGH-SPEED HAND DRYER**

This high-performing hand dryer, with a drying time of 10-15 seconds, has a cover made of 18 gauge stainless steel. Available in 120V (-1) and 240V (-2).

**Unit Size:**

11" x 15<sup>1</sup>/<sub>2</sub>" x 5<sup>2</sup>/<sub>32</sub>"  
(279 x 394 x 145 mm)

**Wall Opening:**

10<sup>1</sup>/<sub>2</sub>" x 14<sup>5</sup>/<sub>8</sub>" x 3<sup>1</sup>/<sub>4</sub>"  
(267 x 371 x 83 mm)

**Decibel Level:** 69 dB-A @ 2M



**0195 PROFILE™ HAND DRYER WITH PORCELAIN ENAMEL COATED CAST IRON COVER**

Universal voltage; automatically adjusts to voltages of 100 to 240 VAC - 50/60 Hz. Quick drying, <25 seconds, and no-touch, energy efficient operation. Modern design and durable.

**Overall Dimensions:**

15<sup>3</sup>/<sub>32</sub>" x 11<sup>7</sup>/<sub>32</sub>" x 3<sup>1</sup>/<sub>16</sub>"  
(383 x 285 x 100 mm)

**Decibel Level:** 69.2 dB-A @ 2M



**0198-93 TURBO-DRI™ Jr. HIGH SPEED HAND DRYER**

Powerful, fast drying, <15 seconds, yet quiet (69 dB-A); automatic operation and resetting thermostat with 2-second delayed turn off. Cover fabricated of heavy-duty, one-piece-formed steel with white enamel, or satin finish stainless steel. Available in 110-120V and 220-240V.

**Overall Dimensions:**

9<sup>2</sup>/<sub>32</sub>" x 6<sup>5</sup>/<sub>8</sub>" x 5<sup>1</sup>/<sub>32</sub>"  
(248.3 x 168.2 x 137.5 mm)

**Decibel Level:** 66 dB-A @ 2M



# ONLY ASI CAN SUPPLY EVERYTHING FOR YOUR WASHROOM

And only ASI Group offers the industry's most cutting-edge hand dryers, soap dispensers, baby changers, paper towel dispensers, partitions, lockers, visual display products, and much, much more.



**ASI** Group  
Integrated Building Products

© 2020 American Specialties, Inc.

American Specialties, Inc.  
441 Saw Mill River Rd, Yonkers, NY 10701  
Tel: 914.476.9000 Fax: 914.476.0688  
E-mail: [info@americanspecialties.com](mailto:info@americanspecialties.com)  
Web: [americanspecialties.com](http://americanspecialties.com)

ASI983101420